

OEM products

- Built-in peristaltic pumps
- Syringe pump
- Tubing

SPETEC®

Built-in OEM peristaltic pumps

The basic purpose of a peristaltic pump is to move fluids from A to B. But this is not enough for manufacturers of analysis equipment. Alongside the technical characteristics such as pulsation, accuracy and stability, they want their pumps to have their own attractive, individual appearance. And that is exactly what Spetec aims for.

We do not offer traditional series. We use a few basic components and parts that are manufactured in large quantities for many customers. The visual appearance, on the other hand, is always designed to customer requirements. In essence, this concerns the color and form of the baseplate on which the actual pump is fitted. It is also possible to influence the color and shape of many other individual components.

The result is a custom product bearing the signature of the device's manufacturer and which perfectly matches the design of the overall unit. Designed to customer requirements, the baseplate on which the pump is fitted is attached to the housing of the analysis unit as a complete assembly.

This brings together a number of key benefits:

- **Low costs**
- **Simple installation during final assembly of the analysis units**
- **Custom styling**



Technical data

Mechanical:	
Number of channels	1 – 8
Drive	Stepper motor without gearing, wear-free
Intermediate shaft	Mounted on 2 ball bearings
All parts	Either made from PVC, PP or powder-coated
Electrical:	
Stepper motor	1.8°
Speed	Up to 100 rpm
Control board	Integrated (optional)
Power supply	22 – 26 V, 1.65 A max.
Input for speed	0 – 5 V, analog
Corresponds to	0 – 100 rpm
Speed setting	Using DIP switch
Enable input (TTL)	
Reverse rotation input (TTL)	
Dosing range	
0 – 8.5 ml/min	

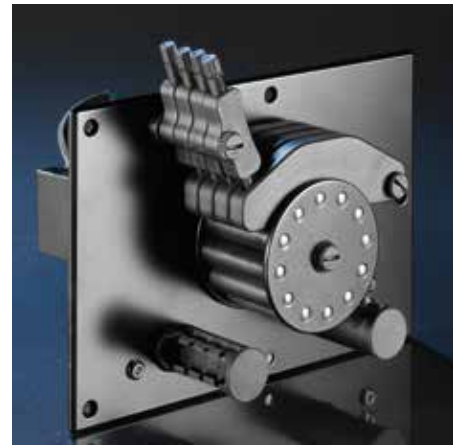
Examples of built-in peristaltic pumps



Diameter roller head: 36 mm



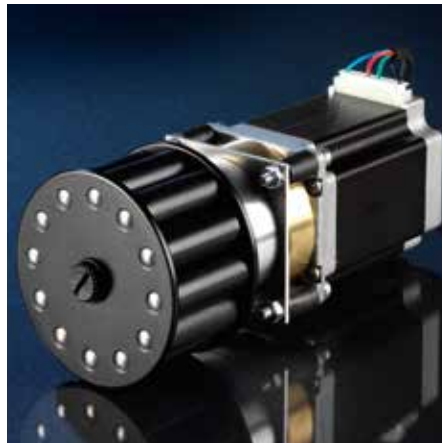
Diameter roller head: 30 mm



Diameter roller head: 72 mm



Diameter roller head: 72 mm



Diameter roller head: 72 mm



Diameter roller head: 72 mm



Diameter roller head: 72 mm



Diameter roller head: 72 mm



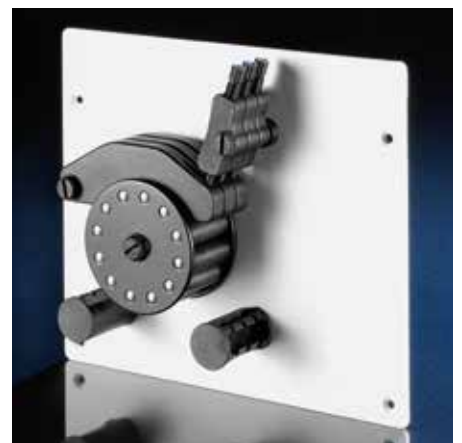
Diameter roller head: 72 mm



Diameter roller head: 36 mm



Diameter roller head: 30 mm



Diameter roller head: 72 mm

SYMAX syringe pump

The Spetec syringe pump is used for metering fluids in the microliter and nanoliter range. Its core components consist of the stepper motor drive with no wear components such as clutch or gearing, high-precision carriage, syringe holder set, and replaceable syringe.

Thanks to the high resolution of 25,600 steps per revolution, individual steps during the movement sequence are barely perceptible.



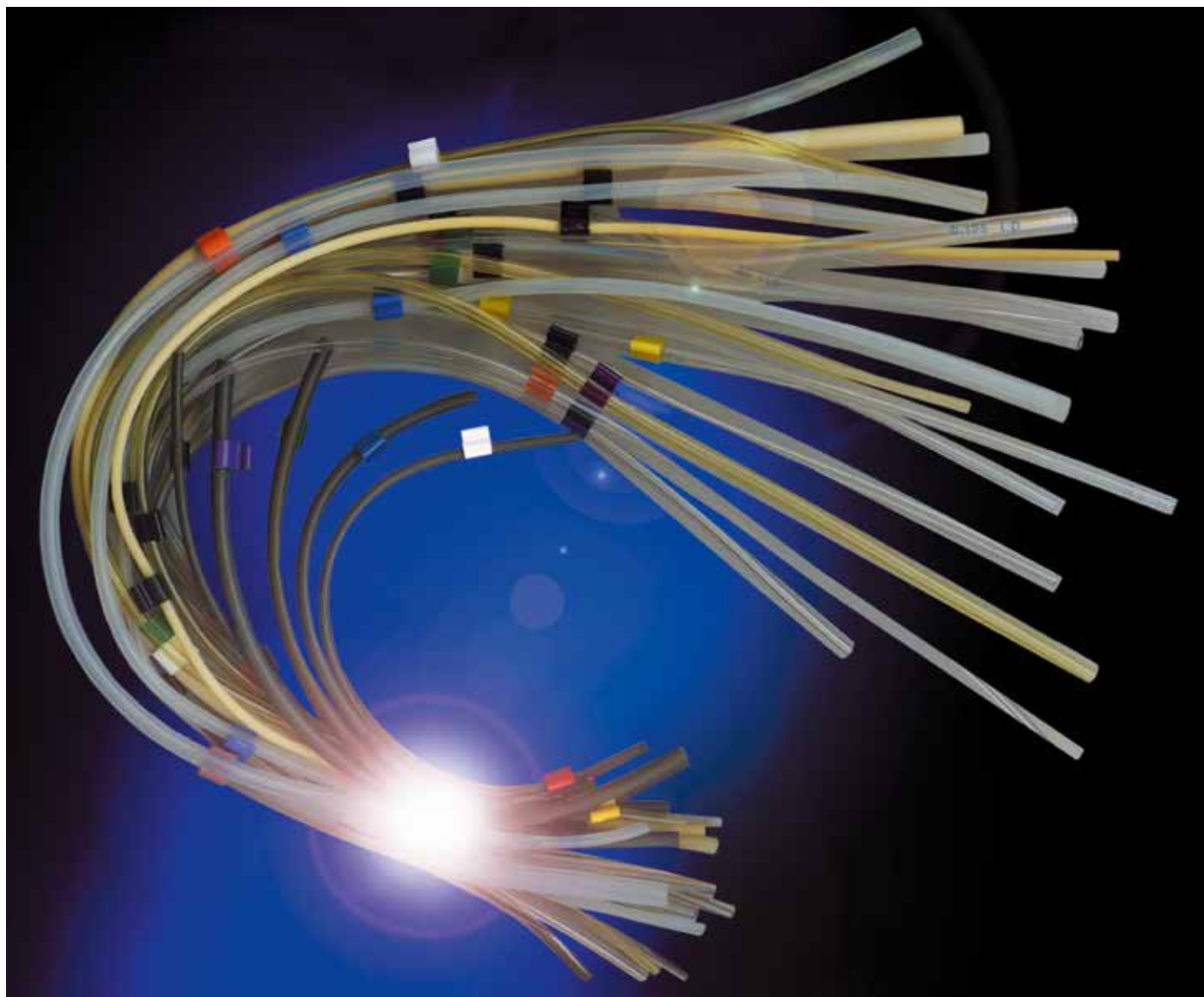
Technical data SYMAX

Mechanical data	
Dimensions LxWxH (without syringe holder)	270 x 85 x 75 (mm)
Weight (without syringe holder)	1,720 g
Maximum stroke	89 mm
Minimum feed rate	12.1 nm/s
Maximum feed rate	1.21 mm/s
Smallest step resolution	24.22 nm
Extensible	Up to 6 modules can be connected in series
Electrical data	
Power supply	Input: 100–240V / 50–60 Hz Output: 24V / 2.4A
Power consumption per pump	Standby current: 210 mA Operating current: 420 mA
Operating Conditions	
Temperature range	+10 to 40°C
Relative humidity	20 % to 80 %, non-condensing
Data interfaces	RS 485 / USB



Request our separate brochure.

Tubing



Variety is where our strength lies. We can supply you with any tubing configuration in a range of diameters and grades with 1, 2 or 3 bridges. Alternatively, we can supply tubing by the meter. Do you need special lengths with unusual bridge intervals? We would be happy to send you an offer with short delivery times.

The material: PVC Standard, PU Longlife, Fluoro rubber, Santoprene, Solvent Flex and silicone.



Request our separate brochure.

SPETEC® GmbH
Berghamer Str. 2
D-85435 Erding

Phone: +49 (0)8122/99533
Fax: +49 (0)8122/10397

E-mail: spetec@spetec.de
www.spetec.de

 **SPETEC**®

1000 021E Graphic design: www.vongoesse.com

