

# Spetec Clean room accessories

- Clean room clothing
- Clean room gloves
- Mats
- Clean room ionization
- Furniture



**SPETEC®**

## Price list

# Clean room accessories

**S**petec is a manufacturer and service provider in the field of clean room technology, Spetec offers not only a wide range of equipment, but also a complete range of clean room accessories from clean room clothing right up to furniture and fittings for clean rooms and airlocks. Alongside washable, reusable and disposable clothing, our range also includes consumables such as cloths recommended for use in clean rooms. Along with overalls, smocks, gloves and overshoes, these are also available in anti-static versions.

If you are unable to find what you are looking for in our catalog, just send us an inquiry and we will work with you to find an optimum solution with short delivery times.

## Size chart for clean room clothing

Clothing size	XXS	XS	S	M	ML	L	XL	XXL	3XL
<b>Overalls/lab coats</b>									
<b>Women</b>	36 – 38	40	42	44 – 46		48 – 50	52 – 54		
<b>Men</b>	44	46	48	50 – 52		54 – 56	58 – 60	62 – 64	66 – 68
<b>Flat hood/head circumference (cm)</b>		53 – 55	57 – 58	59 – 60		61 – 63	64 – 65		
<b>Overshoes*</b>				38 – 39		40 – 43	44 – 47		
<b>Overboots*</b>		34 – 35	36 – 38	39 – 41	42 – 43	44 – 46	47 – 49		

\*Sizes may vary, depending on the shoes worn in the overshoes or overboots.



# Clean room clothing

## Clean room overall – washable

**Material:** 98% conductive PES\* and 2% carbon, **Color:** white  
**Description:** Raglan sleeve, high collar two snap buttons, sewn collar patch with label, hanging loop in collar, anti-static knitted cuffs, adjustable ankle closure with press stud, elasticated tunnel waistband (button-adjustable), autoclavable

Recommended clean room class	Sizes	Order number	PQ	€*
ISO 4 – 9	XS	111-2110	1	
	S	111-2111		
	M	111-2112		
	L	111-2113		
	XL	111-2114		

## Clean room smock – washable

**Material:** 98% conductive PES\* and 2% carbon, **Color:** white  
**Description:** High collar with press stud, hanging loop in collar, sewn collar patch, anti-static knitted cuffs, 2 hip pockets, autoclavable

Recommended clean room class	Sizes	Order number	PQ	€*
ISO 7 – 9	XXS	111-2210	1	
	XS	111-2211		
	S	111-2212		
	M	111-2213		
	L	111-2214		
	XL	111-2215		
	XXL	111-2216		
	XXXL	111-2217		

## Coverall clean room hood – washable

**Material:** 98% conductive PES\* and 2% carbon, **Color:** white  
**Description:** Spiral zip at the front, flatly hood section, buckle at back for adjustment, shoulder protection, with insertion opening for spectacle temples, sterilizable

Recommended clean room class	Sizes	Order number	PQ	€*
ISO 4 – 9	S	111-2310	1	
	M	111-2311		
	L	111-2312		
	XL	111-2313		

## Overshoes – washable

**Material:** conductive PES\*, **Color:** white  
**Description:** flat, elasticated band and press studs for width adjustment, flexible plastic sole **Supplied as:** 1 Pair

Recommended clean room class	Sizes	Order number	PQ	€*
ISO 6 – 9	M	111-2410	1	
	L	111-2411		
	XL	111-2412		



# Clean room gloves



## Coated nylon gloves – washable

**Material:** Nylon, coating (palm): polyurethane (abrasion-resistant)

**Color:** white

**Description:** Breathable, vapor-permeable, seamless, flexible and tight-fitting, washable at 40 degrees

**Supplied as:** 10 pairs (pack quantity)

Recommended clean room class	Sizes	Order number	PQ	€*
ISO 6 – 9	S	111-1510	1	
	M	111-1511		
	L	111-1512		
	XL	111-1513		
	XXL	111-1514		



## Nylon gloves – washable

**Material:** Nylon, not coated **Color:** white

**Description:** Ambidextrous, breathable, vapor-permeable, seamless, flexible and tight-fitting, washable at 40 degrees

**Supplied as:** 10 pairs (pack quantity)

Recommended clean room class	Sizes	Order number	PQ	€*
ISO 8 – 9	S	111-1520	1	
	M	111-1521		
	L	111-1522		
	XL	111-1523		
	XXL	111-1524		



## ESD-safe nylon gloves – washable

**Material:** Nylon with carbon (ESD), not coated

**Color:** gray

**Description:** ESD-conductive ( $10^6 - 10^9$  Ohm), ambidextrous, breathable, vapor-permeable, seamless, flexible and tight-fitting, washable at 40 degrees

**Supplied as:** 10 pairs (pack quantity)

Recommended clean room class	Sizes	Order number	PQ	€*
ISO 8 – 9	S	111-1530	1	
	M	111-1531		
	L	111-1532		
	XL	111-1533		
	XXL	111-1534		



## Nitrile gloves orange

**Material:** Nitrile/neoprene, powder-free, non-latex **Color:** orange

**Description:** Ambidextrous, ESD properties, micro-organism and virus resistant

**Supplied as:** 10 dispenser boxes each containing 90 gloves (PQ)

Recommended clean room class	Sizes	Order number	PQ	€*
ISO 7 – 9	XS	111-1540	1	
	S	111-1541		
	M	111-1542		
	L	111-1543		
	XL	111-1544		

## Clean room visitors

### Disposable visitor's smock – anti-static

**Material:** Polypropylene **Color:** white

**Description:** Anti-static, knee-length, press studs, elasticated sleeves

**Supplied as:** 1 smock per bag / 50 bags per box (PQ)

Recommended clean room class	Sizes	Order number	PQ	€*
ISO 8 – 9	M	111-1230	1	
	L	111-1231		
	XL	111-1232		
	XXL	111-1233		



### Tyvek disposable smock

**Material:** Tyvek **Color:** white

**Description:** Knee-length, plastic press studs, individually packed, no pockets, with elasticated cuffs

**Supplied as:** 10 smock per bag / 5 bags per box (PQ)

Recommended clean room class	Sizes	Order number	PQ	€*
ISO 7 – 9	M	111-1240	1	
	L	111-1241		
	XL	111-1242		
	XXL	111-1243		



### Disposable smock – anti-static

**Material:** Polypropylene **Color:** white

**Description:** Anti-static, press studs, 2 pockets, no elasticated sleeves

**Supplied as:** 1 smock per bag / 50 bags per box (PQ)

Recommended clean room class	Sizes	Order number	PQ	€*
ISO 8 – 9	M	111-1250	1	
	L	111-1251		
	XL	111-1252		
	XXL	111-1253		



## Clean room visitors



### Disposable visitor's overall

**Material:** Polypropylene **Color:** white

**Description:** Elasticated at wrists and ankles, hood, zip cover

**Supplied as:** 1100 overalls (PQ)

Recommended clean room class	Sizes	Order number	PQ	€*
ISO 5 – 7	M	111-1120	1	
	L	111-1121		
	XL	111-1122		
	XXL	111-1123		

### Tyvek disposable overall

**Material:** Tyvek **Color:** white

**Description:** Large, breathable ACT back panel from the hood to the heels, three-piece ergonomic hood, external seams, zip, elasticated wrists and ankles

**Supplied as:** 100 overalls (PQ)

Recommended clean room class	Sizes	Order number	PQ	€*
ISO 5 – 7	M	111-1130	1	
	L	111-1131		
	XL	111-1132		
	XXL	111-1133		

### Disposable overshoes

**Material:** Polyethylene **Color:** white **Description:** low, dimensions 41 x 15 cm

**Supplied as:** 300 overshoes (PQ)

Recommended clean room class	Sizes	Order number	PQ	€*
ISO 6 – 9		111-1420	1	

### Disposable overshoes

**Material:** Polyethylene **Color:** blue

**Description:** low, dimensions 41 x 15 cm, food-safe

**Supplied as:** 2,000 overshoes (PQ)

Recommended clean room class	Sizes	Order number	PQ	€*
ISO 6 – 9		111-1422	1	

### Disposable fleece cap

**Material:** long-fiber fleece **Color:** white

**Description:** Elasticated, breathable

**Head circumference:** S = 53cm, M = 58cm, L = 61cm

**Supplied as:** 100 caps per bag / 10 bags per box (PQ)

Recommended clean room class	Sizes	Order number	PQ	€*
ISO 6 – 9	S	111-1330	1	
	M	111-1331		
	L	111-1332		

# Ionization

## Ionization gun (tabletop unit)

- Fast static discharge  $\pm 1000$  V through  $\pm 100$  V
- Operates with compressed air at 0.5 through 6.5 bar
- Air filter for clean air
- Cable length: 3000 mm
- Compressed air must be supplied externally

Recommended clean room class	Sizes	Order number	PQ	€
ISO 5 – 9		11-0616	1	1,950.00

## Ionization gun with compressed air support

- Includes sensor head and controller
- AC pulse method
- Nominal output voltage  $\pm 6$  kV
- includes power supply, control electronics and housing
- Extension for discharge head, length: 3000 mm
- Magnetic valve for compressed air control
- Compressed air must be supplied externally

Recommended clean room class	Sizes	Order number	PQ	€
ISO 6 – 9		11-0613	1	3,590.00

## Ionization bar

- Integrated controller
- Discharge control: I.C.C. method
- Ion balance:  $\pm 30$  V
- Working distance 50 through 2000 mm
- Includes option of compressed air support
- No filter unit
- Compressed air must be supplied externally

Recommended clean room class	Sizes	Order number	PQ	€
ISO 6 – 9	560 mm	11-0612	1	2,890.00
	840 mm	11-0636		3,490.00
	1,390 mm	11-0609		4,300.00

## Ionizing air blower

- Adjustable air flow
- Large volumes of ionized air for neutralizing static charging and preventing dust
- Operational status displayed with LEDs
- Dimensions (WxHxD): 200x213x72 mm

Recommended clean room class	Sizes	Order number	PQ	€
ISO 7 – 9		11-0627	1	1,645.00



# Extraction



## Extraction and filtering unit for dust and smoke

- Air flow: 190 m<sup>3</sup>/h
- Max. vacuum: 3,200 Pa
- Infinitely variable flow regulation
- EC fan
- **Filter:** Pre-filter, HEPA filter

Recommended clean room class	Sizes	Order number	PQ	€
ISO 6 – 9		11-0566	1	2,470.00



## Extraction and filtering unit for gases, vapor and odors

- Air flow: 635 m<sup>3</sup>/h
- Max. vacuum: 3,200 Pa
- Infinitely variable flow regulation
- EC fan
- **Filter:** Pre-filter, activated carbon filter

Recommended clean room class	Sizes	Order number	PQ	€
ISO 6 – 9		11-0564	1	4,890.00



## Extraction and filtering unit for fumes

- Air flow: 220 m<sup>3</sup>/h
- Max. vacuum: 22,000 Pa
- Infinitely variable flow regulation
- EC fan
- **Filter:** Pre-filter, HEPA filter H13, activated carbon filter

Recommended clean room class	Sizes	Order number	PQ	€
ISO 6 – 9		11-0565	1	4,550.00



# Table internals for connection to exhaust air

## Standard table mounting with perforated plate

- 2 exhaust air connections optionally DN 50 or DN 80
- **Housing colour:** ESD RAL 7035
- **Outside dimensions:** 400 x 600 mm
- **Extraction area:** 350 x 550 mm

Recommended clean room class	Sizes	Order number	PQ	€
ISO 7 – 9		11-0696	1	979,00

## Standard table mounting with ESD-hard laminate insert

- Pad: ESD-hard laminate
- 2 exhaust air connections optionally DN 50 or DN 80
- **Housing colour:** ESD RAL 7035
- **Outside dimensions:** 400 x 600 mm
- **Extraction area:** 350 x 550 mm

Recommended clean room class	Sizes	Order number	PQ	€
ISO 7 – 9		11-0697	1	1.100,00

## Standard table installation with GFK\* grating layer

- Grating layer: 31 x 31 mm
- 2 exhaust air connections optionally DN 50 or DN 80
- **Housing colour:** ESD RAL 7035
- **Outside dimensions:** 400 x 600 mm
- **Extraction area:** 350 x 550 mm

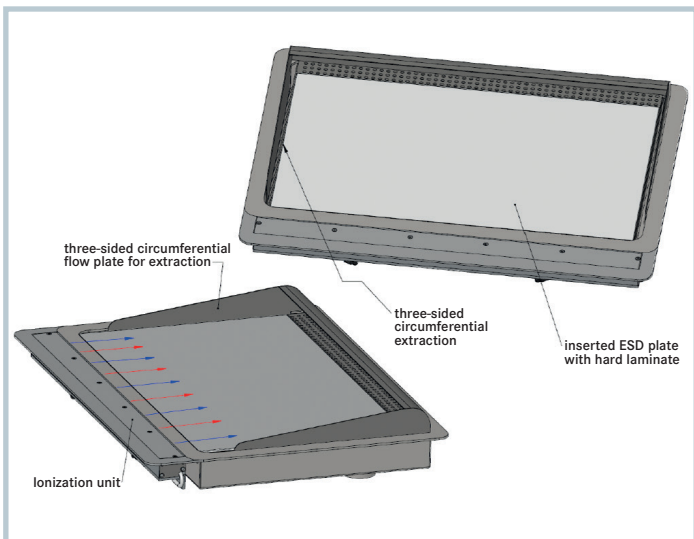
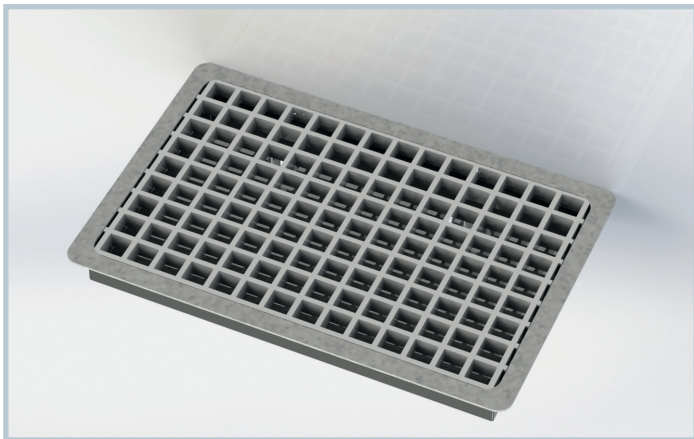
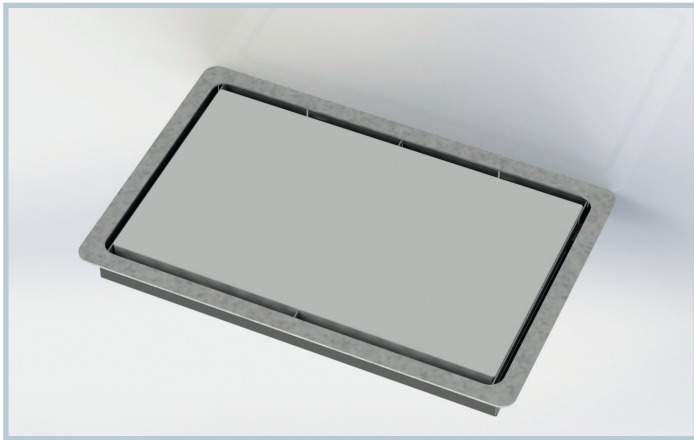
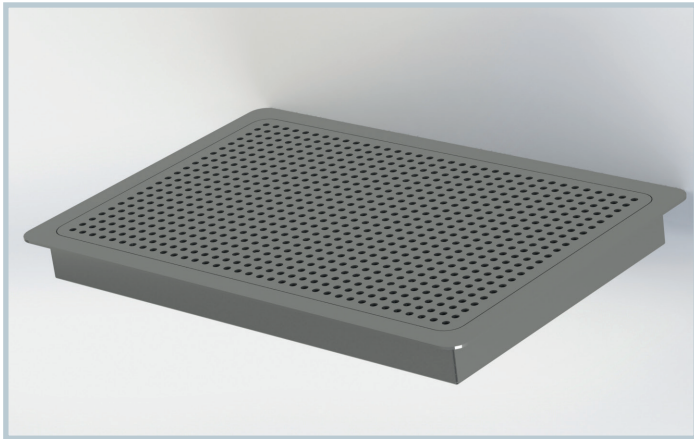
\*fibreglass reinforced plastic

Recommended clean room class	Sizes	Order number	PQ	€
ISO 7 – 9		11-0698	1	1.190,00

## Standard table installation with ESD hard laminate inlay incl. three-sided circulating flow sheet

- Three-sided rotating extraction with VA flow plate
- Incl. sealing air bar made of aluminium, anodised, for compressed air
- Edition: ESD hard laminate
- Housing: ESD RAL 7035
- **Outside dimensions:** 400 x 600 mm
- **Extraction area:** 350 x 550 mm
- Optional on request: Ionization unit for sealing air bar

Recommended clean room class	Sizes	Order number	PQ	€
ISO 7 – 9		11-0699	1	2.990,00



# Mats, furnishings

## Permanent mat for airlocks

**Material:** Patented polymer **Color:** blue

**Description:** 1200 x 600 x 3 mm, permanently adhesive, washable. This mat is primarily designed for intensive pre-cleaning of the soles of shoes.

The saturated mat can simply be cleaned with warm water. As soon as the mat is dry again it regains its adhesive properties. No solvent-based cleaning agents should be used as these will destroy the adhesive properties of the mat.

Recommended clean room class	Sizes	Order number	PQ	€
ISO 5 – 9		111-4000	1	137.00

## Peel-off tacky mats for airlocks

**Material:** Peel-off tacky mat **Color:** white

**Description:** 1140 x 660 x 1.5 mm, highly adhesive, antimicrobially treated

**Supplied as:** 30 layers per mat, 8 mats per box. Because these mats are highly adhesive and robust, they tend to be used for cleaning the soles of shoes, the wheels of carts, etc. directly in the airlock area.

When the top layer of the tacky mat is saturated it is torn off to reveal the next adhesive layer beneath. There is a reverse index number on each layer to show clearly how many layers are left. The robust construction means that equipment or tool carts can be rolled over the mat without problems.

Recommended clean room class	Sizes	Order number	PQ	€
ISO 4 – 9		111-4010	1	176.00

## Disinfectant dispenser

**Material:** Autoclave-safe metal dispenser

**Description:** Suitable for 1 l bottles, simple pump replacement by removal through the front, easy to clean and operate, dosing amount can be set to approx. 0.75 through 1.5 ml per operation, Delivered with fixtures and fitting instructions. All commercially available bottles can be used.

Recommended clean room class	Sizes	Order number	PQ	€
ISO 5 – 9		111-4020	1	144.00

## Disinfectant

**Container:** 1 liter

Hygienic surgical scrub, free of colorants and fragrances.

**Supplied as:** 10 x 1 liter (bottle) (PQ)

Recommended clean room class	Sizes	Order number	PQ	€
ISO 6 – 9		111-4030	1	140.00

## Lens cloth

**Material:** Polyester **Color:** white

**Description:** 23 x 23 cm, soft fleece, particularly suitable for easily scratched surfaces **Supplied as:** 2 x 150 cloths (PQ) (PE bag), recommended for cleaning our laminar flow boxes

Recommended clean room class	Sizes	Order number	PQ	€
ISO 5 – 9		111-1620	1	62.00

## Microfiber cloths

**Material:** Microfiber **Color:** white

**Description:** 23 x 23 cm, extremely soft, particularly suitable for easily scratched surfaces

**Supplied as:** 10 x 10 cloths (PQ) (PE bag)

Recommended clean room class	Sizes	Order number	PQ	€
ISO 4 – 9		111-1630	1	145.00

## Anti-static polyester cloths

**Material:** Polyester (with anti-static yarn) **Color:** white

**Description:** 23 x 23 cm, pre-washed

**Supplied as:** 2 x 150 cloths (PQ) (PE bag)

Recommended clean room class	Sizes	Order number	PQ	€
ISO 5 – 9		111-1640	1	612.00

## Anti-static swivel chair

**Material:** Anti-static, conductive imitation leather covering

**Color:** black

**Description:** Seat height: 470 – 610 mm, back height: 430 mm, load capacity 120 kg, permanent contact back rest, polished aluminum base, soft double casters, partially assembled in box

Recommended clean room class	Sizes	Order number	PQ	€
ISO 4 – 9		11-6000	1	508.00

## Step-over bench for airlock

**Material:** Melamine-faced board

**Description:** Dimensions (WxHxD): 1360 x 600 x 450 mm, single-sided version with rear wall, 3 rows of shoe racks, 15 compartments

Recommended clean room class	Sizes	Order number	PQ	€
ISO 4 – 9		11-6030	1	730.00

## Anti-static stool

**Material:** Anti-static, conductive imitation leather covering

**Color:** black

**Description:** Seat height: 460 – 630 mm, load capacity: 120 kg, release ring for height adjustment, polished aluminum base, partially assembled in box

Recommended clean room class	Sizes	Order number	PQ	€
ISO 4 – 9		11-6001	1	310.00

## Step-over bench for airlock

**Material:** Melamine-faced board

**Description:** Dimensions (WxHxD): 820 x 600 x 450 mm, single-sided version with rear wall, 3 rows of shoe racks, 9 compartments

Recommended clean room class	Sizes	Order number	PQ	€
ISO 4 – 9		11-6031	1	510.00

## Stainless steel clean room table

**Material:** Stainless steel

**Description:** Table frame and top polished (grain size 320), table top not perforated

Recommended clean room class	Dimensions in mm (WxDxH)	Order number	PQ	€
ISO 4 – 9	1200x800x850	11-0249	1	1,200.00
ISO 4 – 9	1400x800x850	11-0256	1	1,390.00
ISO 4 – 9	2000x800x850	11-0257	1	1,750.00

## Anti-static clean-room table

**Material:** Fully conductive worktop

**Color:** RAL 7035 (light gray)

**Description:** MDimensions (WxDxH): 2000 x 1000 x 800 mm, load capacity of working surface: 200 kg evenly distributed

Recommended clean room class	Sizes	Order number	PQ	€
ISO 6		11-6050	1	1,100.00

### Locker with 4 compartments (sections)

**Material:** Sheet steel **Color:** RAL 7035, light gray

**Description:** Dimensions (WxD): 1200 x 500 mm, Height: 1800 mm, compartment width: 300 mm, smooth door fronts, quiet door closing with rubber buffers, cylinder security lock, 2 keys, 1 hat shelf, 1 clothes rail, 3 hooks

Recommended clean room class	Sizes	Order number	PQ	€
ISO 4 – 9		11-6010	1	1,050.00

### Anti-static trolley

**Loading surface (WxD):** 1600 x 800 mm, closed-end trolley, load capacity: 600 kg, loading height 270 mm **Color:** gray

Recommended clean room class	Sizes	Order number	PQ	€
ISO 4 – 9		11-6040	1	890.00

### Trolley

**Material:** Stainless steel

**Description:** Dimensions: (LxWxH): 610 x 455 x 1000 mm, 4 casters, with 3 closed shelves, total load capacity: 170kg

Recommended clean room class	Sizes	Order number	PQ	€
ISO 4 – 9		11-6041	1	1,300.00

**Other accessories available on request.**

**Tel: +49 8122 95909-0**

**Fax: +49 8122 95909-55**

**Email: [spetec@spetec.de](mailto:spetec@spetec.de)**

**[www.spetec.de](http://www.spetec.de)**



SPETEC® GmbH  
Am Kletthamer Feld 15  
85435 Erding  
Germany

Tel: +49 8122 95909-0  
Fax: +49 8122 95909-55

Email: [spetec@spetec.de](mailto:spetec@spetec.de)  
[www.spetec.de](http://www.spetec.de)

